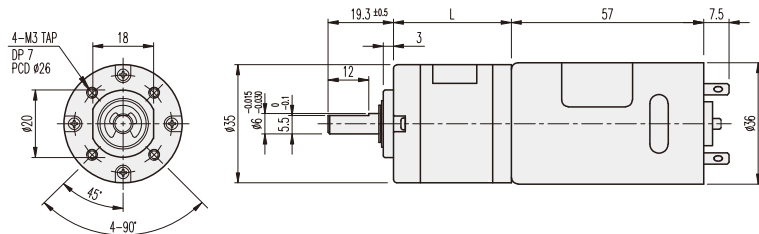


## K35-TYPE

## Planetary GEARHEAD

### DIMENSIONS

#### K35-3657 SERIES



GEARHEAD LENGTH

RATIO	L
1/005	22.1
1/014 ~ 1/027	28.5
1/051 ~ 1/139	34.9
1/189 ~ 1/721	41.3

#### MOTOR PERFORMANCE DATA

MODEL	ITEM	VOLTAGE (DC)	NO LOAD		AT MAX. EFF.			STALL		WEIGHT (g)
			mA	rpm	gf-cm	A	rpm	A	kgf-cm	
KD3657U1		12V	300	6000	200	1.5	5000	10	1.6	218
KD3657U2		24V	150	6000	200	0.9	5000	5	1.6	

#### AT MAXIMUM EFFICIENCY (K35-□□□□-KD3657U□)

GEAR	MODEL	KD3657U1		KD3657U2	
		DC 12V		DC 24V	
		rpm	kgf-cm	rpm	kgf-cm
1/0005		1000	1	1000	1
1/0014		357	2.2	357	2.2
1/0019		263	3	263	3
1/0027		185	4.2	185	4.2
1/0051		98	7.4	98	7.4
1/0071		70	10	70	10
1/0100		50	12	50	12
1/0139		35.9	12	35.9	12
1/0189		26.4	12	26.4	12
1/0264		18.9	12	18.9	12
1/0369		13.5	12	13.5	12
1/0516		9.6	12	9.6	12
1/0721		6.9	12	6.9	12

\* Gearbox output shaft rotation direction is same direction with motor.