

INDUCTION MOTOR

40W

□80mm

LEAD WIRE TYPE

K8I□40F□



SPECIFICATIONS

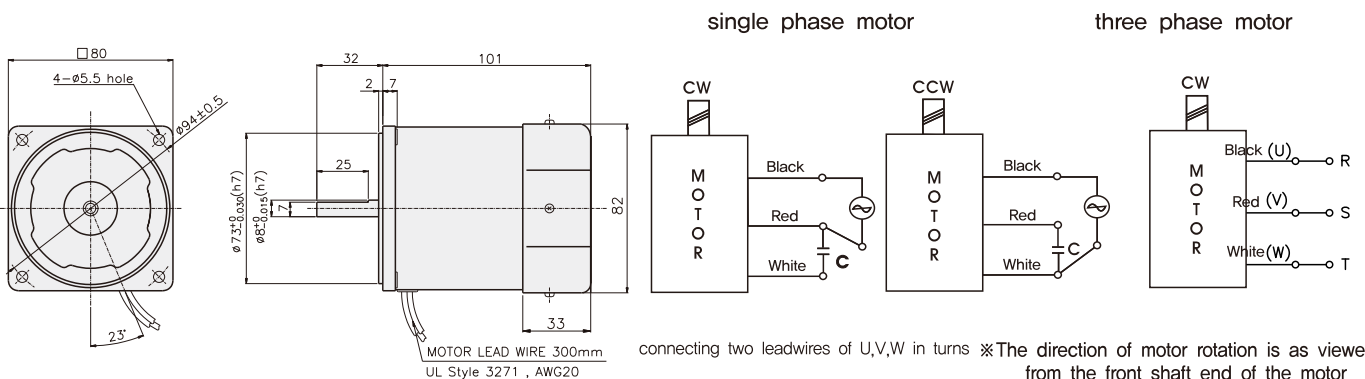
40W continuous rating, four poles

Model	Out Put (W)	Voltage (V)	Frequency (Hz)	Current (A)	Start T. (N*m/Kgf*cm)	Rated T. (N*m/Kgf*cm)	Speed (rpm)	Condenser (μF)	
K8I□40FC K8I□40FC	single-phase	40	220	50	0.43	0.23	0.31	1250	2.5
						2.30	3.10		
			60	0.35	0.23	0.24	1600		
					2.30	2.40			
			230	50	0.45	0.27	0.31	1250	
						2.70	3.10		
60	0.36	0.24	0.24	1600					
		2.40	2.40						
K8I□40FH K8I□40FH	three-phase	40	220	50	0.48	0.97	0.29	1300	-
						9.70	2.90		
			60	0.35	0.71	0.24	1600		
					7.10	2.40			
			230	50	0.5	1.01	0.29	1300	
						10.1	2.90		
60	0.37	0.74	0.24	1600					
		7.40	2.90						
K8I□40FM K8I□40FM	three-phase	380	50	0.26	0.76	0.29	1300	-	
					7.60	2.90			
			60	0.2	0.66	0.24	1600		
					6.60	2.40			

* □ : SHAFT SHAPE (S : STRAIGHT, G : PINION)

* 3 phase motor for over 380 voltage can't be used with inverter. Motor winding insulation can be damaged.

DIMENSIONS & CONNECTION DIAGRAMS



GEARHEAD

DIMENSIONS

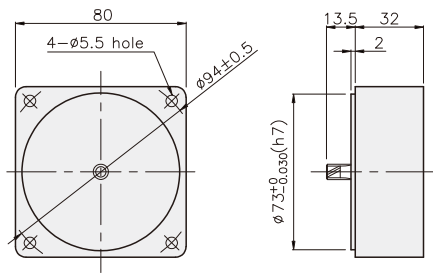
K8G□B(C)



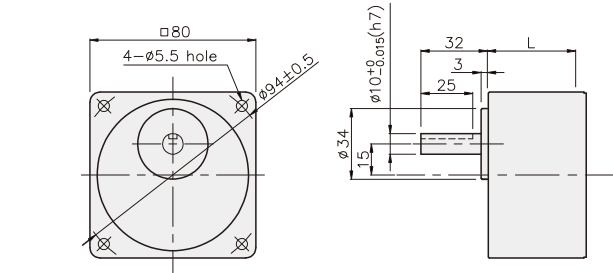
K8IG40F□ + K8G□B(C)



DECIMAL GEARHEAD
K8G10BX

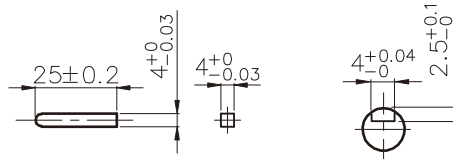


GEARHEAD
K8G□B(C)

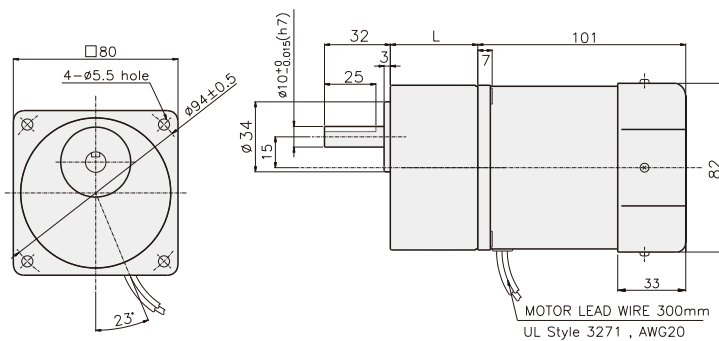


KEY SPEC

- KEY
- KEY GROOVE



K8IP40F□ + K8G□B(C)



DIMENSION TABLE

PART No	L	Application Model	Mounting BOLT
01	32	K8G3~18B(C,M)	M5 P0.8 X 50
02	42.5	K8G20~250B(C,M)	M5 P0.8 X 65

WEIGHT

PART	WEIGHT(kg)	
MOTOR	1.70	
DECIMAL GEARHEAD	0.46	
GEAR HEAD	K8G3~18B(C)	0.51
	K8G20~40B(C)	0.64
	K8G50~250B(C)	0.70