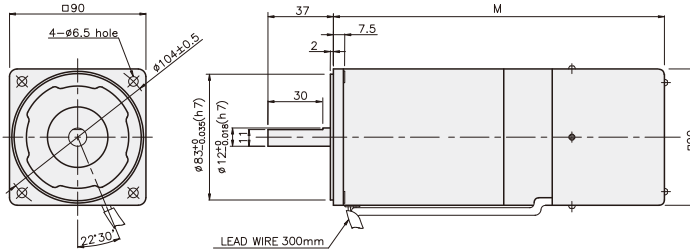
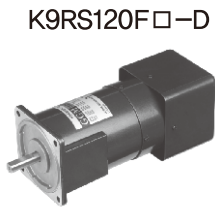


SPEED CONTROL & BRAKE MOTOR

120W

□90mm



DIMENSION TABLE

PART No	M	Application Model
K9RS120F□-D-C50	236	50Hz
K9RS120F□-D	216	60Hz

※ 50Hz motor is "C50" added to model number.

SPECIFICATIONS

120W 30 minutes rating, four poles

Model	Voltage (V)	Frequency (Hz)	Speed Range (rpm)	Permissible Torque		Start T. (N·m/kgf·cm)	Current (A)	Condenser (μF)	Friction T. (N·m/kgf·cm)
				1200 rpm	90 rpm				
				(N·m/kgf·cm)	(N·m/kgf·cm)				
K9R□120FJ-D-C50	100	50	90~1400	0.85/8.5	0.31/3.1	0.45/4.5	3.6	40	1/10
		60	90~1700						
K9R□120FU-D	110	60	90~1700	0.8/8	0.28/2.8	0.4/4	3	25	1/10
K9R□120FL-D-C50	200	50	90~1400	0.8/8	0.27/2.7	0.37/3.7	1.4	8.5	1/10
K9R□120FL-D	220	50	90~1400	0.8/8	0.27/2.7	0.37/3.7	1.2	6	1/10
K9R□120FC-D-C50	220	60	90~1400	0.78/7.8	0.29/2.9	0.42/4.2	1.4	7	1/10
K9R□120FD-D-C50	240	50	90~1400	0.8/8	0.27/2.7	0.37/3.7	1.3	6	1/10

* □ : SHAFT SHAPE (S : STRAIGHT, P : PINION)

RATED TORQUE OF GEARHEAD

● Single-phase 100V/115V

unit = above : N·m / below : Kgf·cm

Model	Ratio	Speed(rpm)																								
		3	3,6	5	6	7,5	9	10	12,5	15	18	20	25	30	36	40	50	60	75	90	100	120	150	180	200	
K9R□120F□-D K9P□B, BF	1200	100V/50/60Hz	2,07	2,48	3,44	4,13	5,16	6,20	6,89	7,75	9,29	11,15	12,39	13,94	16,73	20	20	20	20	20	20	20	20	20	20	20
		110V/115V/60Hz	1,94	2,33	3,24	3,89	4,86	5,83	6,48	7,29	8,75	10,50	11,66	13,12	15,75	18,90	20	20	20	20	20	20	20	20	20	20
	90	100V/50/60Hz	0,75	0,90	1,26	1,51	1,88	2,26	2,51	2,82	3,39	4,07	4,52	5,08	6,10	7,32	8,14	10,17	12,20	13,73	16,47	18,31	20	20	20	20
		110V/115V/60Hz	0,68	0,82	1,13	1,36	1,70	2,04	2,27	2,55	3,06	3,67	4,08	4,59	5,51	6,61	7,35	9,19	11,02	12,40	14,88	16,53	19,84	20	20	20

● Single-phase 200V/240V

unit = above : N·m / below : Kgf·cm

Model	Ratio	Speed(rpm)																								
		3	3,6	5	6	7,5	9	10	12,5	15	18	20	25	30	36	40	50	60	75	90	100	120	150	180	200	
K9R□120F□-D K9P□B, BF	1200	200V/220V/230V/240V/50Hz	1,94	2,33	3,24	3,89	4,86	5,83	6,48	7,29	8,75	10,50	11,66	13,12	15,75	18,90	20	20	20	20	20	20	20	20	20	20
		200V/220V/230V/60Hz	1,90	2,27	3,16	3,79	4,74	5,69	6,32	7,11	8,53	10,24	11,37	12,79	15,35	18,42	20	20	20	20	20	20	20	20	20	20
	90	200V/220V/230V/240V/50Hz	0,66	0,79	1,09	1,31	1,64	1,97	2,19	2,46	2,95	3,54	3,94	4,43	5,31	6,38	7,09	8,86	10,63	11,96	14,35	15,94	19,13	20	20	20
		200V/220V/230V/60Hz	0,70	0,85	1,17	1,41	1,76	2,11	2,35	2,64	3,17	3,81	4,23	4,76	5,71	6,85	7,61	9,51	11,42	12,84	15,41	17,12	20	20	20	20

- * Gearhead and decimal gearhead are sold separately.
- * The code in □ of gearhead model is for gear ratio.
- * color indicates that the output shaft of the geared motor rotates in the same direction as the output shaft of the motor. Others indicate rotation in the opposite direction.
- * If you are to have less ratio than the ratio in the table, you can install the decimal gearhead, which has one tenth of the ratio, between the gearhead and the motor. In this case, the permissible torque is 20N·m/200kgf·cm.
- * RPM is based on motor's synchronous rpm (50HZ:1500rpm, 60HZ:1800rpm) and calculated by dividing gear ratio. Actual rpm is 2~20% less than indicating rpm according to load size.

GEARHEADS

RATED TORQUE OF GEARHEAD

● Single-phase 100V/115V

unit : above : N · m / below : kgfcm

Model Motor/ Gearhead	Ratio Speed(rpm)	Ratio																								
		3	3.6	5	6	7.5	9	10	12.5	15	18	20	25	30	36	40	50	60	75	90	100	120	150	180	200	
K9R□120F□-D K9P□BU, BUF	1200	100V 50/60HZ	2.07 20.7	2.48 24.8	3.44 34.4	4.13 41.3	5.16 51.6	6.20 62.0	6.89 68.9	7.75 77.5	9.29 92.9	11.15 111.5	12.39 123.9	13.94 139.4	16.73 167.3	20.08 201	22.31 223	27.88 279	30 300	30 300	30 300	30 300	30 300	30 300	30 300	30 300
		100V/115V 60HZ	1.94 19.4	2.33 23.3	3.24 32.4	3.89 38.9	4.86 48.6	5.83 58.3	6.48 64.8	7.29 72.9	8.75 87.5	10.50 105.0	11.66 116.6	13.12 131.2	15.75 157.5	18.90 189.0	21.00 210	26.24 262	30 300	30 300	30 300	30 300	30 300	30 300	30 300	30 300
	90	100V 50/60HZ	0.75 7.5	0.90 9.0	1.26 12.6	1.51 15.1	1.88 18.8	2.26 22.6	2.51 25.1	2.82 28.2	3.39 33.9	4.07 40.7	4.52 45.2	5.08 50.8	6.10 61.0	7.32 73.2	8.14 81.4	10.17 101.7	12.20 122.0	13.73 137.3	16.47 164.7	18.31 183.1	21.97 219.7	27.46 274.6	30 300	30 300
		110V/115V 60HZ	0.68 6.8	0.82 8.2	1.13 11.3	1.36 13.6	1.70 17.0	2.04 20.4	2.27 22.7	2.55 25.5	3.06 30.6	3.67 36.7	4.08 40.8	4.59 45.9	5.51 55.1	6.61 66.1	7.35 73.5	9.19 91.9	11.02 110.2	12.40 124.0	14.88 148.8	16.53 165.3	19.84 198.4	24.80 248.0	29.76 297.6	30 300

● Single-phase 200V/240V

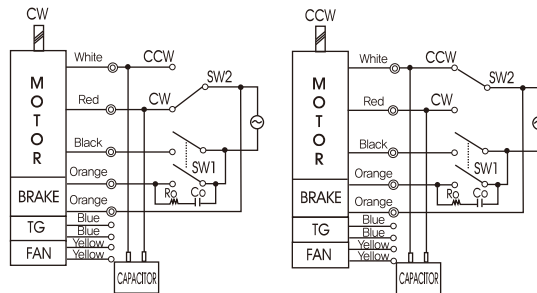
unit : above : N · m / below : kgfcm

Model Motor/ Gearhead	Ratio Speed(rpm)	Ratio																								
		3	3.6	5	6	7.5	9	10	12.5	15	18	20	25	30	36	40	50	60	75	90	100	120	150	180	200	
K9R□120F□-D K9P□BU, BUF	1200	200V/220V/230V 240V 50Hz	1.94 19.4	2.33 23.3	3.24 32.4	3.89 38.9	4.86 48.6	5.83 58.3	6.48 64.8	7.29 72.9	8.75 87.5	10.50 105.0	11.66 116.6	13.12 131.2	15.75 157.5	18.90 189.0	21.00 210.0	26.24 262.4	30 300	30 300	30 300	30 300	30 300	30 300	30 300	30 300
		200V/220V 230V 60Hz	1.90 19.0	2.27 22.7	3.16 31.6	3.79 37.9	4.74 47.4	5.69 56.9	6.32 63.2	7.11 71.1	8.53 85.3	10.24 102.4	11.37 113.7	12.79 127.9	15.35 153.5	18.42 184.2	20.47 204.7	25.59 255.9	30 300	30 300	30 300	30 300	30 300	30 300	30 300	30 3000
	90	200V/220V/230V 240V 50Hz	0.66 6.6	0.79 7.9	1.09 10.9	1.31 13.1	1.64 16.4	1.97 19.7	2.19 21.9	2.46 24.6	2.95 29.5	3.54 35.4	3.94 39.4	4.43 44.3	5.31 53.1	6.38 63.8	7.09 70.9	8.86 88.6	10.63 106.3	11.96 119.6	14.35 143.5	15.94 159.4	19.13 191.3	23.91 239.1	28.70 287.0	30 300
		200V/220V 230V 60Hz	0.70 7.0	0.85 8.5	1.17 11.7	1.41 14.1	1.76 17.6	2.11 21.1	2.35 23.5	2.64 26.4	3.17 31.7	3.81 38.1	4.23 42.3	4.76 47.6	5.71 57.1	6.85 68.5	7.61 76.1	9.51 95.1	11.42 114.2	12.84 128.4	15.41 154.1	17.12 171.2	20.55 205.5	25.69 256.9	30 300	30 300

- * Gearhead and decimal gearhead are sold separately.
- * The code in □ of gearhead model is for gear ratio.
- * color indicates that the output shaft of the geared motor rotates in the same direction as the output shaft of the motor. Others indicate rotation in the opposite direction.
- * If you are to have less ratio than the ratio in the table, you can install the decimal gearhead, which has one tenth of the ratio, between the gearhead and the motor. In this case, the permissible torque is 30N · m/300kgfcm.
- * RPM is based on motor's synchronous rpm (50HZ:1500rpm, 60HZ:1800rpm) and calculated by dividing gear ratio. Actual rpm is 2~20% less than indicating rpm according to load size.

CONNECTION DIAGRAMS

Connect Cr circuit for absorbing surge voltage as connection diagram to protect contact point.
 $R_o = 5 - 200\Omega$
 $C_o = 0.1 \sim 0.2\mu F$ 200WV(400WV)



※The direction of motor rotation is as viewed from the front shaft end of the motor

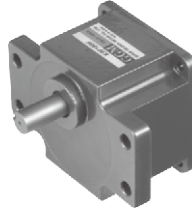
GEARHEADS

DIMENSIONS

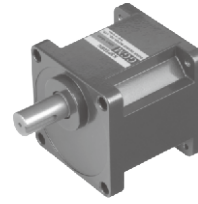
K9P□B



K9P□BF, BUF



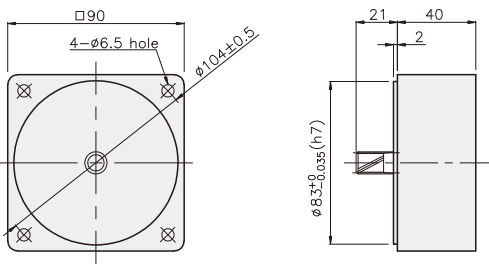
K9P□BU



DECIMAL GEARHEAD

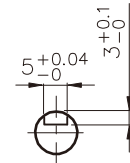
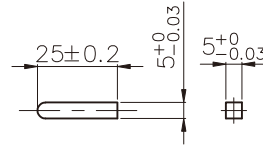
K9P10BX

KEY SPEC



● KEY

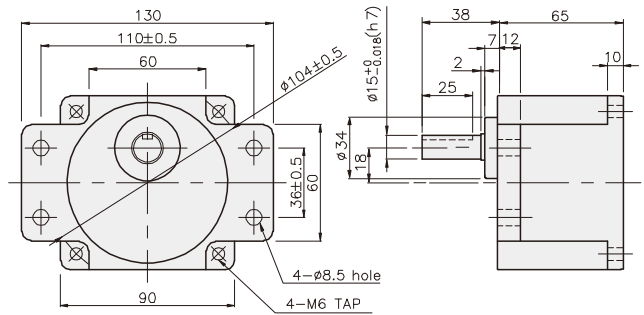
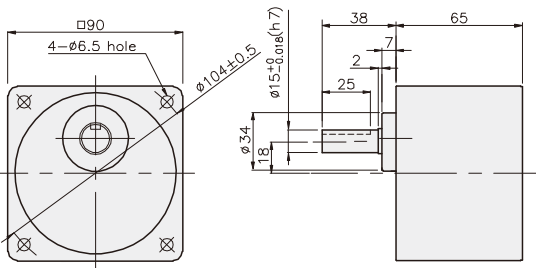
● KEY GROOVE



GEARHEAD

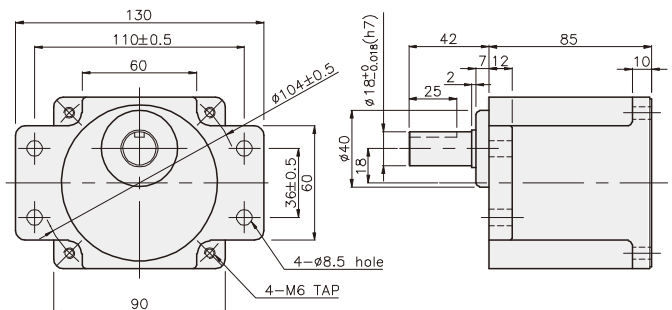
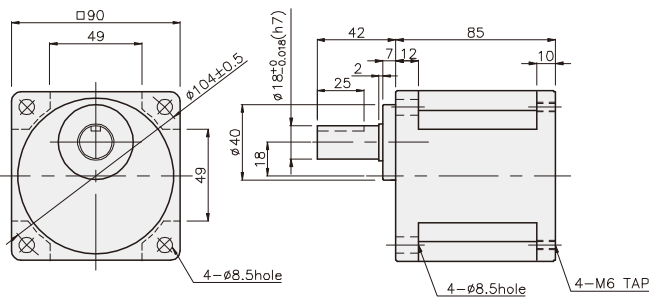
K9P□B

K9P□BF



K9P□BU

K9P□BUF



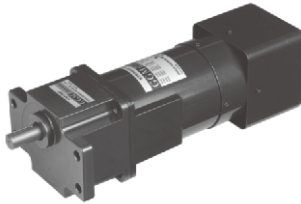
GEARHEADS

DIMENSIONS

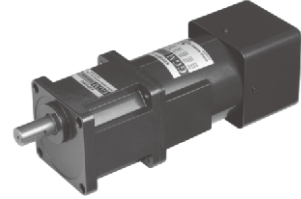
K9RP120F□-D + K9P□B



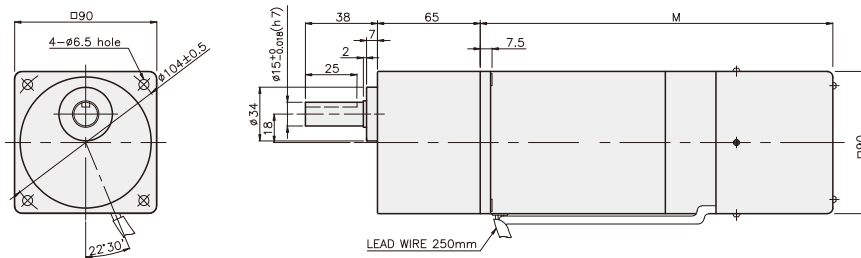
K9RP120F□-D + K9P□BF, BUF



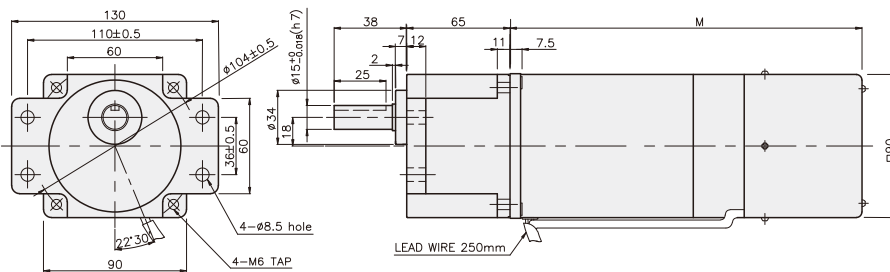
K9RP120F□-D + K9P□BU



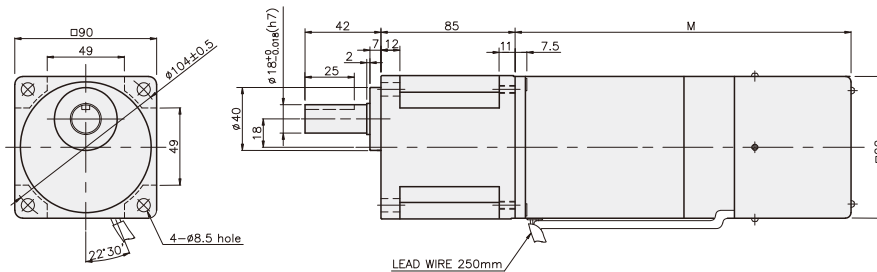
K9RP120F□-D + K9P□B



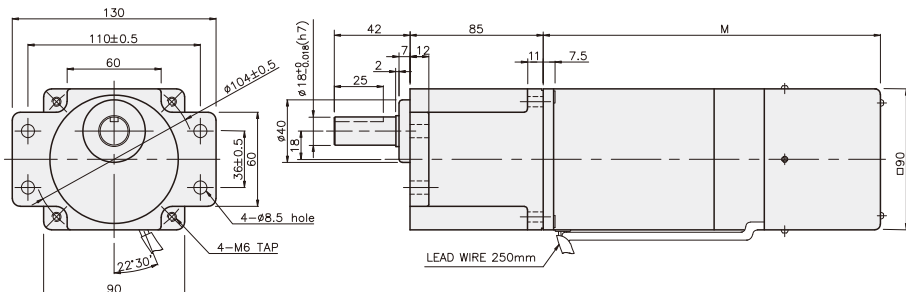
K9RP120F□-D + K9P□BF



K9RP120F□-D + K9P□BU



K9RP120F□-D + K9P□BUF



WEIGHT

PART	WEIGHT(kg)
MOTOR	3,54
DECIMAL GEAR HEAD	0,62

DIMENSION TABLE

PART No.	M	Application Model
01	155	50Hz
02	135	60Hz

DIMENSION TABLE

PART No.	L	Application Model	Mounting BOLT
01	65	K9P3~200B	M6 P1,0 X 95
02	40	K9P10BX	M6 P1,0 X 140

WEIGHT

PART	WEIGHT(kg)
K9P3~10B	1,22
K9P12,5~20B	1,32
K9P25~60B	1,42
K9P75~200B	1,45

DIMENSION TABLE

PART No.	L	Application Model	Mounting BOLT
01	65	K9P3~200BF	M6 P1,0 X 25
02	40	K9P10BX	M6 P1,0 X 65

WEIGHT

PART	WEIGHT(kg)
K9P3~10BF	1,22
K9P12,5~20BF	1,30
K9P25~60BF	1,42
K9P75~200BF	1,44

DIMENSION TABLE

PART No.	L	Application Model	Mounting BOLT
01	85	K9P3~200BU	M6 P1,0 X 20
02	40	K9P10BX	M6 P1,0 X 60

WEIGHT

PART	WEIGHT(kg)
K9P3~10BU	1,44
K9P12,5~20BU	1,55
K9P25~60BU	1,69
K9P75~200BU	1,74

DIMENSION TABLE

PART No.	L	Application Model	Mounting BOLT
01	85	K9P3~200BUF	M6 P1,0 X 20
02	40	K9P10BX	M6 P1,0 X 65

WEIGHT

PART	WEIGHT(kg)
K9P3~10BUF	1,50
K9P12,5~20BUF	1,62
K9P25~60BUF	1,76
K9P75~200BUF	1,82