

GEARHEAD

RATED TORQUE OF GEARHEAD

● Single-phase 200V/240V

unit = above : N·m / below : kgf·cm

Model Motor/Gearhead	Ratio Speed(rpm)	3	3.6	5	6	7.5	9	10	12.5	15	18	20	25	30	36	40	50	60	75	90	100	120	150	180	200	
		K9R□120F□-SU K9P□B, BF	1200	200V/220V/ 230V/240V 50Hz	1.94 19.4	2.33 23.3	3.24 32.4	3.89 38.9	4.86 48.6	5.38 53.8	6.48 64.8	7.29 72.9	8.75 87.5	10.50 105.0	11.66 116.6	13.12 131.2	15.75 157.5	18.90 189.0	20	20	20	20	20	20	20	20
200V/220V/ 230V/240V 60Hz	1.90 19.0			2.27 22.7	3.16 31.6	3.79 37.9	4.74 47.4	5.69 56.9	6.32 63.2	7.11 71.1	8.53 85.3	10.24 102.4	11.37 113.7	12.79 127.9	15.35 153.5	18.42 184.2	20	20	20	20	20	20	20	20	20	20
90	200V/220V/ 230V/240V 50Hz		0.66 6.6	0.79 7.9	1.09 10.9	1.31 13.1	1.64 16.4	1.97 19.7	2.19 21.9	2.46 24.6	2.95 29.5	3.54 35.4	3.94 39.4	4.43 44.3	5.31 53.1	6.38 63.8	7.09 70.9	8.86 88.6	10.63 106.3	11.96 119.6	14.35 143.5	15.94 159.4	19.13 191.3	20	20	20
	200V/220V/ 230V/240V 60Hz		0.70 7.0	0.85 8.5	1.17 11.7	1.41 14.1	1.76 17.6	2.11 21.1	2.35 23.5	2.64 26.4	3.17 31.7	3.81 38.1	4.23 42.3	4.76 47.6	5.71 57.1	6.85 68.5	7.61 76.1	9.51 95.1	11.42 114.2	12.84 128.4	15.41 154.1	17.12 171.2	20	20	20	20

● Single-phase 100V/115V

unit = above : N·m / below : kgf·cm

Model Motor/Gearhead	Ratio Speed(rpm)	3	3.6	5	6	7.5	9	10	12.5	15	18	20	25	30	36	40	50	60	75	90	100	120	150	180	200	
		K9R□120F□-SU K9P□BU, BUF	1200	100V/ 50/60Hz	2.07 20.7	2.48 24.8	3.44 34.4	4.13 41.3	5.16 51.6	6.20 62.0	6.89 68.9	7.75 77.5	9.29 92.9	11.15 111.5	12.39 123.9	13.94 139.4	16.73 167.3	20.08 201	22.31 223	27.88 279	30	30	30	30	30	30
110V/115V/ 60Hz	1.94 19.4			2.33 23.3	3.24 32.4	3.89 38.9	4.86 48.6	5.83 58.3	6.48 64.8	7.29 72.9	8.75 87.5	10.50 105.0	11.66 116.6	13.12 131.2	15.75 157.5	18.90 189.0	21.00 210	26.24 262	30	30	30	30	30	30	30	30
90	100V/ 50/60Hz		0.75 7.5	0.90 9.0	1.26 12.6	1.51 15.1	1.88 18.8	2.26 22.6	2.51 25.1	2.82 28.2	3.39 33.9	4.07 40.7	4.52 45.2	5.08 50.8	6.10 61.0	7.32 73.2	8.14 81.4	10.17 101.7	12.20 122.0	13.73 137.3	16.47 164.7	18.31 183.1	21.97 219.7	27.46 274.6	30	30
	110V/115V/ 60Hz		0.68 6.8	0.82 8.2	1.13 11.3	1.36 13.6	1.70 17.0	2.04 20.4	2.27 22.7	2.55 25.5	3.06 30.6	3.67 36.7	4.08 40.8	4.59 45.9	5.51 55.1	6.61 66.1	7.35 73.5	9.19 91.9	11.02 110.2	12.40 124.0	14.88 148.8	16.53 165.3	19.84 198.4	24.80 248.0	29.76 297.6	30

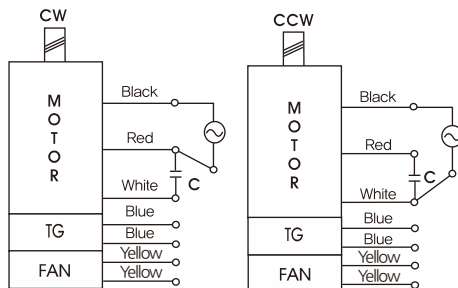
● Single-phase 200V/240V

unit = above : N·m / below : kgf·cm

Model Motor/Gearhead	Ratio Speed(rpm)	3	3.6	5	6	7.5	9	10	12.5	15	18	20	25	30	36	40	50	60	75	90	100	120	150	180	200	
		K9R□120F□-SU K9P□BU, BUF	1200	200V/220V/ 230V/240V 50Hz	1.94 19.4	2.33 23.3	3.24 32.4	3.89 38.9	4.86 48.6	5.83 58.3	6.48 64.8	7.29 72.9	8.75 87.5	10.50 105.0	11.66 116.6	13.12 131.2	15.75 157.5	18.90 189.0	21.00 210.0	26.24 262.4	30	30	30	30	30	30
200V/220V/ 230V/240V 60Hz	1.90 19.0			2.27 22.7	3.16 31.6	3.79 37.9	4.74 47.4	5.69 56.9	6.32 63.2	7.11 71.1	8.53 85.3	10.24 102.4	11.37 113.7	12.79 127.9	15.35 153.5	18.42 184.2	20.47 204.7	25.59 255.9	30	30	30	30	30	30	30	30
90	200V/220V/ 230V/240V 50Hz		0.66 6.6	0.79 7.9	1.09 10.9	1.31 13.1	1.64 16.4	1.97 19.7	2.19 21.9	2.46 24.6	2.95 29.5	3.54 35.4	3.94 39.4	4.43 44.3	5.31 53.1	6.38 63.8	7.09 70.9	8.86 88.6	10.63 106.3	11.96 119.6	14.35 143.5	15.94 159.4	19.13 191.3	23.91 239.1	28.70 287.0	30
	200V/220V/ 230V/240V 60Hz		0.70 7.0	0.85 8.5	1.17 11.7	1.41 14.1	1.76 17.6	2.11 21.1	2.35 23.5	2.64 26.4	3.17 31.7	3.81 38.1	4.23 42.3	4.76 47.6	5.71 57.1	6.85 68.5	7.61 76.1	9.51 95.1	11.42 114.2	12.84 128.4	15.41 154.1	17.12 171.2	20.55 205.5	25.69 256.9	30	30

- * Gearhead and decimal gearhead are sold separately.
- * The code in □ of gearhead model is for gear ratio.
- * color indicates that the output shaft of the geared motor rotates in the same direction as the output shaft of the motor. Others indicate rotation in the opposite direction.
- * If you are to have less ratio than the ratio in the table, you can install the decimal gearhead, which has one tenth of the ratio, between the gearhead and the motor. In this case, the permissible torque is 3N·m/30kgf·cm.
- * RPM is based on motor's synchronous rpm (50HZ:1500rpm, 60HZ:1800rpm) and calculated by dividing gear ratio. Actual rpm is 2~20% less than indicating rpm according to load size.

CONNECTION DIAGRAMS



※The direction of motor rotation is as viewed from the front shaft end of the motor

GEARHEAD

DIMENSIONS

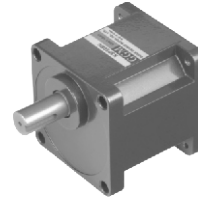
K9P□B



K9P□BF, BUF

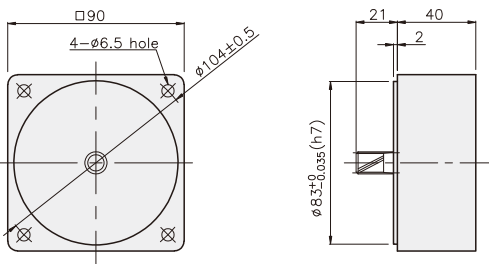


K9P□BU



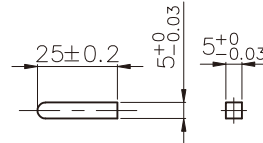
DECIMAL GEARHEAD

K9P10BX

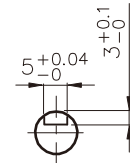


KEYSPEC

● KEY

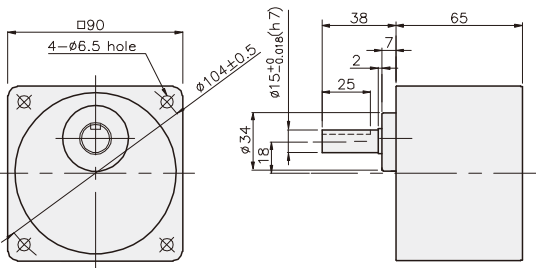


● KEY GROOVE

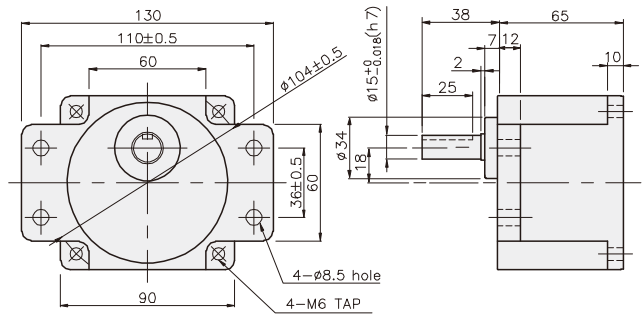


GEARHEAD

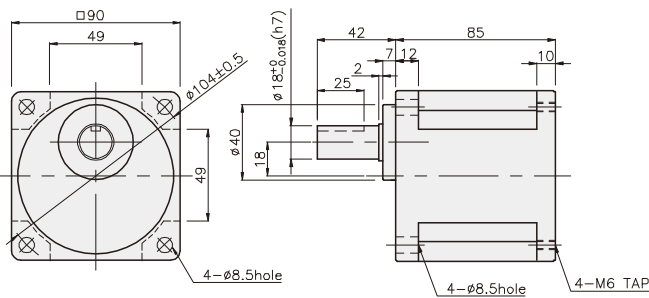
K9P□B



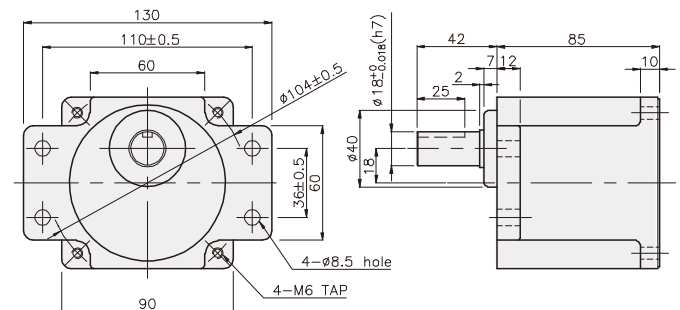
K9P□BF



K9P□BU



K9P□BUF



GEARHEAD

DIMENSIONS

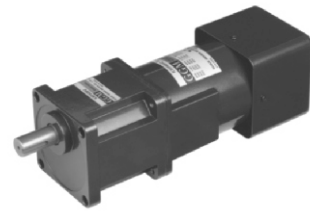
K9RP120F□-SU + K9P□B



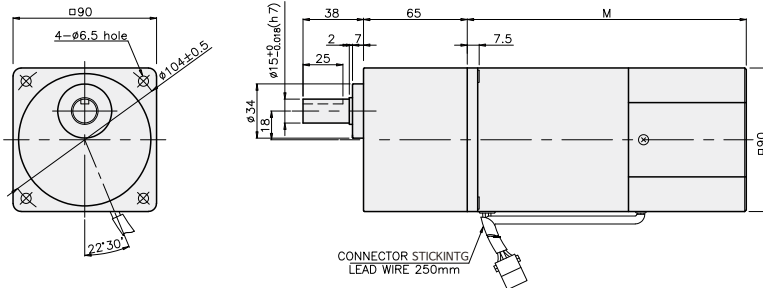
K9RP120F□-SU + K9P□BF, BUF



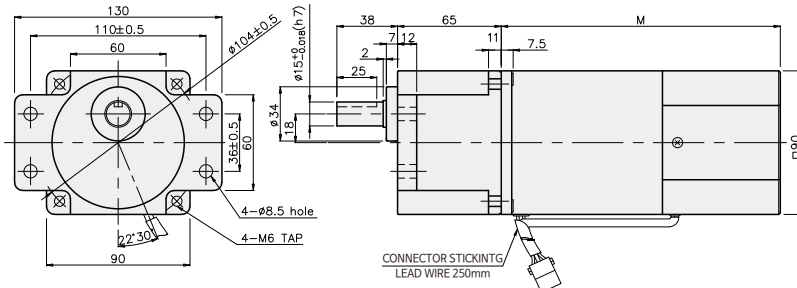
K9RP120F□-SU + K9P□BU



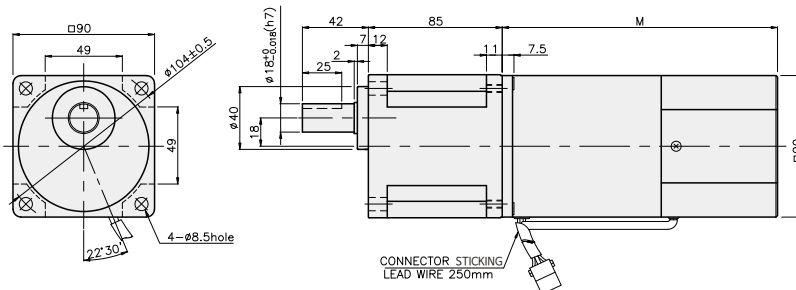
K9RP120F□-SU + K9P□B



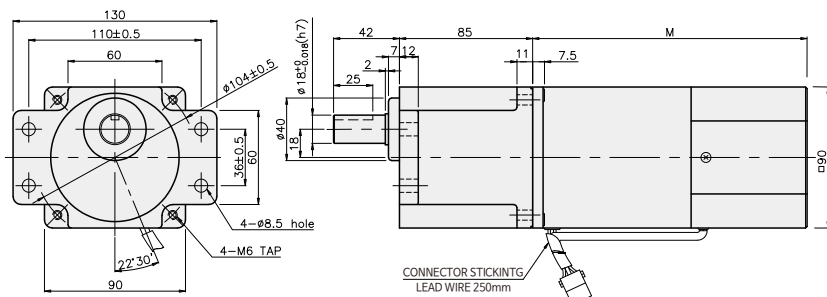
K9RP120F□-SU + K9P□BF



K9RP120F□-SU + K9P□BU



K9RP120F□-SU + K9P□BUF



WEIGHT

PART	WEIGHT(kg)
MOTOR	3.54
DECIMAL GEARHEAD	0.62

DIMENSION TABLE

PART No.	M	Application Model
01	195	50Hz
02	175	60Hz

DIMENSION TABLE

PART No.	Application Model	Mounting BOLT
01	K9P3~200B	M6 P1.0 × 95
02	K9P10BX	M6 P1.0 × 140

WEIGHT

PART	WEIGHT(kg)
K9P3~10B	1.22
K9P12.5~20B	1.32
K9P25~60B	1.42
K9P75~200B	1.45

DIMENSION TABLE

PART No.	Application Model	Mounting BOLT
01	K9P3~200BF	M6 P1.0 × 20
02	K9P10BX	M6 P1.0 × 65

WEIGHT

PART	WEIGHT(kg)
K9P3~10BF	1.22
K9P12.5~20BF	1.30
K9P25~60BF	1.42
K9P75~200BF	1.44

DIMENSION TABLE

PART No.	Application Model	Mounting BOLT
01	K9P3~200BU	M6 P1.0 × 20
02	K9P10BX	M6 P1.0 × 65

WEIGHT

PART	WEIGHT(kg)
K9P3~10BU	1.44
K9P12.5~20BU	1.55
K9P25~60BU	1.69
K9P75~200BU	1.74

DIMENSION TABLE

PART No.	Application Model	Mounting BOLT
01	K9P3~200BUF	M6 P1.0 × 20
02	K9P10BX	M6 P1.0 × 65

WEIGHT

PART	WEIGHT(kg)
K9P3~10BUF	1.50
K9P12.5~20BUF	1.62
K9P25~60BUF	1.76
K9P75~200BUF	1.82