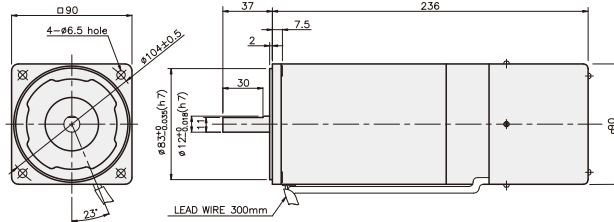


## SPEED CONTROL & BRAKE MOTOR

### 180W □90mm

K9RS180F□-D



SPEED CONTROL & BRAKE MOTOR

### SPECIFICATIONS

180W 30 minutes rating, four poles

| Model       | Voltage (V) | Frequency (Hz) | Speed Range (rpm) | Permissible Torque     |                      | Start T. (N*m / Kgf*cm) | Current (A) | Condenser (μF) | Friction T. (N*m / Kgf*cm) |
|-------------|-------------|----------------|-------------------|------------------------|----------------------|-------------------------|-------------|----------------|----------------------------|
|             |             |                |                   | 1200rpm (N*m / Kgf*cm) | 90rpm (N*m / Kgf*cm) |                         |             |                |                            |
| K9R□180FJ-D | 100         | 50             | 90 ~ 1400         | 0.88/8.8               | 0.33/3.3             | 0.5/5                   | 5           | 40             | 1/10                       |
|             |             | 60             | 90 ~ 1700         |                        |                      |                         |             |                |                            |
| K9R□180FU-D | 110         | 60             | 90 ~ 1700         | 1.1/11                 | 0.38/3.8             | 0.58/5.8                | 5           | 30             | 1/10                       |
|             | 115         |                |                   |                        |                      |                         | 5.2         |                |                            |
| K9R□180FL-D | 200         | 50             | 90 ~ 1400         | 0.88/8.8               | 0.3/3                | 0.45/4.5                | 2.2         | 12             | 1/10                       |
|             |             | 60             | 90 ~ 1700         |                        |                      | 0.38/3.8                |             |                |                            |
| K9R□180FC-D | 220         | 50             | 90 ~ 1400         | 0.88/8.8               | 0.3/3                | 0.42/4.2                | 2.2         | 8              | 1/10                       |
|             |             |                | 90 ~ 1700         |                        |                      | 0.38/3.8                |             |                |                            |
|             |             |                | 90 ~ 1400         |                        |                      | 0.48/4.8                | 2.4         |                |                            |
|             |             |                |                   |                        |                      | 90 ~ 1700               | 0.45/4.5    |                |                            |
| K9R□180FD-D | 240         | 50             | 90 ~ 1400         | 0.95/9.5               | 0.32/3.2             | 0.55/5.5                | 2           | 8              | 1/10                       |

\* □ : SHAFT SHAPE (S : STRAIGHT, P : PINION)

### RATED TORQUE OF GEARHEAD

● Single-phase 100V/115V unit = above : N·m / below : Kgf·cm

| Model                      | Ratio | 3            | 3.6  | 5    | 6    | 7.5  | 9    | 10   | 12.5 | 15    | 18    | 20    | 25    | 30    | 36    | 40    | 50    | 60    | 75    | 90    | 100   | 120   | 150   | 180   | 200 |    |
|----------------------------|-------|--------------|------|------|------|------|------|------|------|-------|-------|-------|-------|-------|-------|-------|-------|-------|-------|-------|-------|-------|-------|-------|-----|----|
| K9R□180F□-D<br>K9P□BU, BUF | 1200  | 100V/50/60HZ | 2.14 | 2.57 | 3.56 | 4.28 | 5.35 | 6.42 | 7.13 | 8.02  | 9.62  | 11.55 | 12.83 | 14.43 | 17.32 | 20.79 | 23.09 | 28.87 | 30    | 30    | 30    | 30    | 30    | 30    | 30  | 30 |
|                            |       | 110V/60HZ    | 2.67 | 3.21 | 4.46 | 5.35 | 6.68 | 8.02 | 8.91 | 10.02 | 12.03 | 14.43 | 16.04 | 21.65 | 25.98 | 28.87 | 30    | 30    | 30    | 30    | 30    | 30    | 30    | 30    | 30  | 30 |
|                            | 90    | 100V/50/60HZ | 0.80 | 0.96 | 1.34 | 1.60 | 2.00 | 2.41 | 2.67 | 3.01  | 3.61  | 4.33  | 4.81  | 5.41  | 6.50  | 7.79  | 8.66  | 10.83 | 12.99 | 14.61 | 17.54 | 19.49 | 23.38 | 29.23 | 30  | 30 |
|                            |       | 110V/60HZ    | 0.92 | 1.11 | 1.54 | 1.85 | 2.31 | 2.77 | 3.08 | 3.46  | 4.16  | 4.99  | 5.54  | 6.23  | 7.48  | 8.98  | 9.97  | 12.47 | 14.96 | 16.83 | 20.19 | 22.44 | 26.93 | 30    | 30  | 30 |

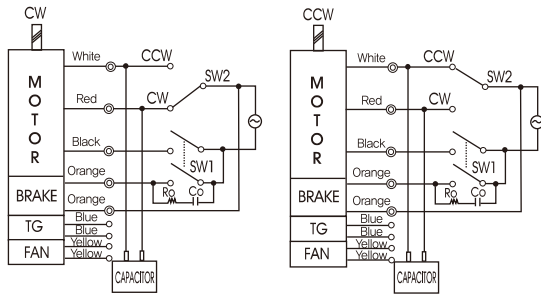
● Single-phase 200V/240V unit = above : N·m / below : Kgf·cm

| Model                      | Ratio | 3                         | 3.6  | 5    | 6    | 7.5  | 9    | 10   | 12.5 | 15   | 18    | 20    | 25    | 30    | 36    | 40    | 50    | 60    | 75    | 90    | 100   | 120   | 150   | 180   | 200 |    |
|----------------------------|-------|---------------------------|------|------|------|------|------|------|------|------|-------|-------|-------|-------|-------|-------|-------|-------|-------|-------|-------|-------|-------|-------|-----|----|
| K9R□180F□-D<br>K9P□BU, BUF | 1200  | 200V/220V/50/60HZ         | 2.14 | 2.57 | 3.56 | 4.28 | 5.35 | 6.42 | 7.13 | 8.02 | 9.62  | 11.55 | 12.83 | 14.43 | 17.32 | 20.79 | 23.09 | 28.87 | 30    | 30    | 30    | 30    | 30    | 30    | 30  | 30 |
|                            |       | 230V/50/60HZ/240V/50/60HZ | 2.31 | 2.77 | 3.85 | 4.62 | 5.77 | 6.93 | 7.70 | 8.66 | 10.39 | 12.47 | 13.85 | 15.58 | 18.70 | 22.44 | 24.93 | 30    | 30    | 30    | 30    | 30    | 30    | 30    | 30  | 30 |
|                            | 90    | 200V/220V/50/60HZ         | 0.73 | 0.87 | 1.22 | 1.46 | 1.82 | 2.19 | 2.43 | 2.73 | 3.28  | 3.94  | 4.37  | 4.92  | 5.90  | 7.09  | 7.87  | 9.84  | 11.81 | 13.29 | 15.94 | 17.71 | 21.26 | 26.57 | 30  | 30 |
|                            |       | 230V/50/60HZ/240V/50/60HZ | 0.78 | 0.93 | 1.30 | 1.56 | 1.94 | 2.33 | 2.59 | 2.92 | 3.50  | 4.20  | 4.67  | 5.25  | 6.30  | 7.56  | 8.40  | 10.50 | 12.60 | 14.17 | 17.01 | 18.90 | 22.67 | 28.34 | 30  | 30 |

- \* Gearhead and decimal gearhead are sold separately.
- \* The code in □ of gearhead model is for gear ratio.
- \*      color indicates that the output shaft of the geared motor rotates in the same direction as the output shaft of the motor. Others indicate rotation in the opposite direction.
- \* If you are to have less ratio than the ratio in the table, you can install the decimal gearhead, which has one tenth of the ratio, between the gearhead and the motor. In this case, the permissible torque is 30N·m/300kgf·cm.
- \* RPM is based on motor's synchronous rpm (50HZ:1500rpm, 60HZ:1800rpm) and calculated by dividing gear ratio. Actual rpm is 2~20% less than indicating rpm according to load size.

## GEARHEADS

### CONNECTION DIAGRAMS



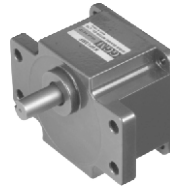
※The direction of motor rotation is as viewed from the front shaft end of the motor

### DIMENSIONS

K9P□BU



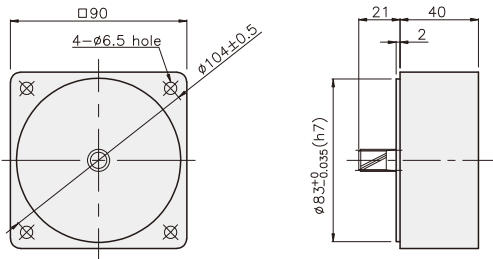
K9P□BUF



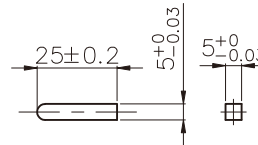
### DECIMAL GEARHEAD

K9P10BX

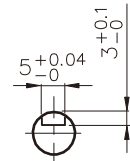
### KEY SPEC



#### • KEY



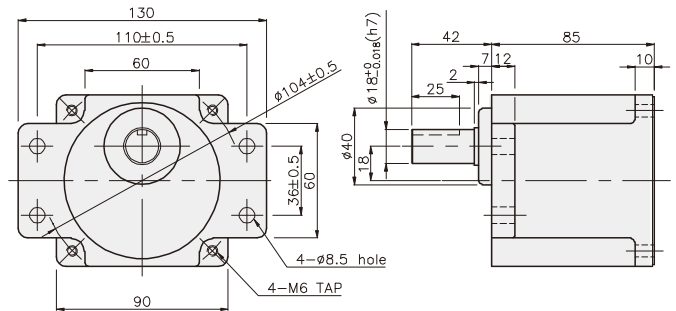
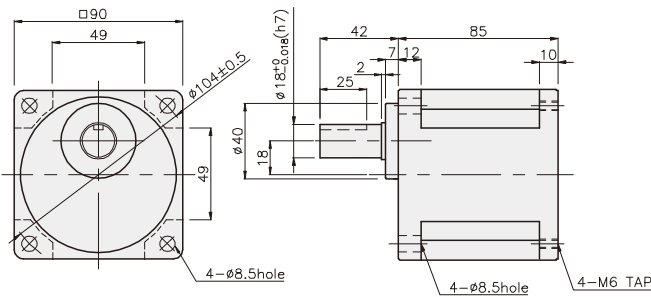
#### • KEY GROOVE



### GEARHEAD

K9P□BU

K9P□BUF



## GEARHEADS

### DIMENSIONS

SPEED CONTROL & BRAKE MOTOR

K9RP180F□-D + K9P□BU



K9RP180F□-D + K9P□BUF



#### WEIGHT

| PART              | WEIGHT(kg) |
|-------------------|------------|
| MOTOR             | 4.70       |
| DECIMAL GEAR HEAD | 0.62       |

#### DIMENSION TABLE

| PART No. | L  | Application Model | Mounting BOLT |
|----------|----|-------------------|---------------|
| 01       | 85 | K9P3~200BU        | M6 P1,0 X 20  |
| 02       | 40 | K9P10BX           | M6 P1,0 X 60  |

#### WEIGHT

| PART         | WEIGHT(kg) |
|--------------|------------|
| K9P3~10BU    | 1.44       |
| K9P12.5~20BU | 1.55       |
| K9P25~60BU   | 1.69       |
| K9P75~200BU  | 1.74       |

#### DIMENSION TABLE

| PART No. | L  | Application Model | Mounting BOLT |
|----------|----|-------------------|---------------|
| 01       | 85 | K9P3~200BUF       | M6 P1,0 X 20  |
| 02       | 40 | K9P10BX           | M6 P1,0 X 65  |

#### WEIGHT

| PART          | WEIGHT(kg) |
|---------------|------------|
| K9P3~10BUF    | 1.50       |
| K9P12.5~20BUF | 1.62       |
| K9P25~60BUF   | 1.76       |
| K9P75~200BUF  | 1.82       |

