

INDUCTION MOTOR

40W

□80mm LEAD WIRE TYPE

K8I□40F□



SPECIFICATIONS

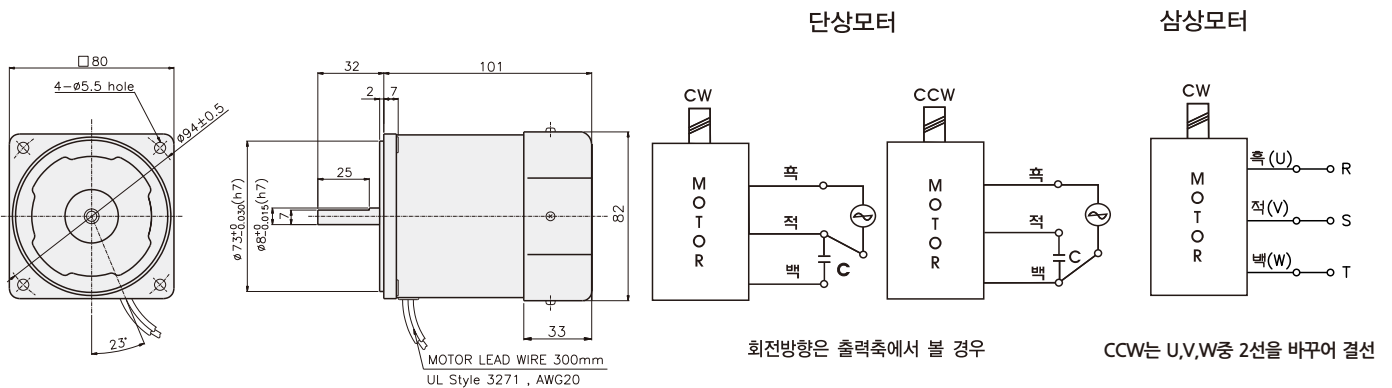
40W 연속정격, 4극

Model	Out Put (W)	Voltage (V)	Frequency (Hz)	Current (A)	Start T. (N*m/Kgf*cm)	Rated T. (N*m/Kgf*cm)	Speed (rpm)	Condenser (μF)	
K8I□40FC K8I□40FC	단상	40	220	50	0.43	0.23	0.31	1250	2.5
						2.30	3.10		
			230	50	0.45	0.23	0.24	1250	
						2.30	2.40		
			230	60	0.36	0.24	0.24	1600	
						2.40	2.40		
K8I□40FH K8I□40FH	삼상	40	220	50	0.48	0.97	0.29	1300	-
						9.70	2.90		
			230	50	0.5	0.71	0.24	1300	
						7.10	2.40		
			230	60	0.37	1.01	0.29	1600	
						10.1	2.90		
380	50	0.26	0.74	0.24	1300				
			7.40	2.90					
380	60	0.2	0.76	0.29	1600				
			7.60	2.90					
K8I□40FM K8I□40FM	-	-	50	0.26	0.66	0.24	1300	-	
					6.60	2.40			

* □ : SHAFT 형상 (S : STRAIGHT, G : PINION)

* 삼상 380V이상 사양의 MOTOR는 INVERTER와의 조합에서는 사용 할 수 없습니다. MOTOR 권선의 절연이 열화되어 파손될 가능성이 있습니다.

DIMENSIONS & CONNECTION DIAGRAMS



GEARHEAD

DIMENSIONS

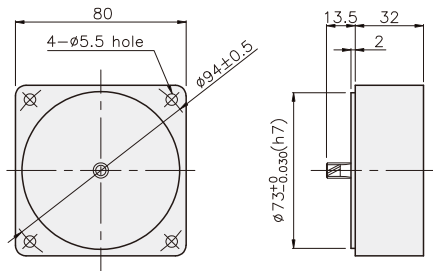
K8G□B(C)



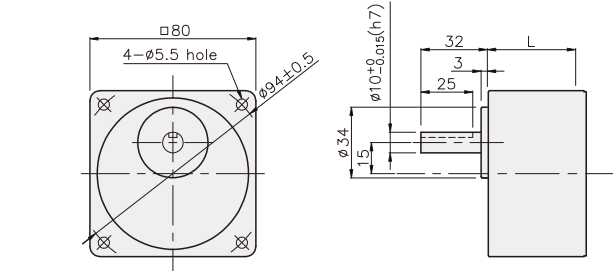
K8IG40F□ + K8G□B(C)



DECIMAL GEARHEAD
K8G10BX

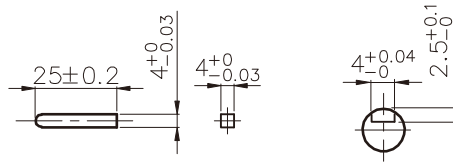


GEARHEAD
K8G□B(C)

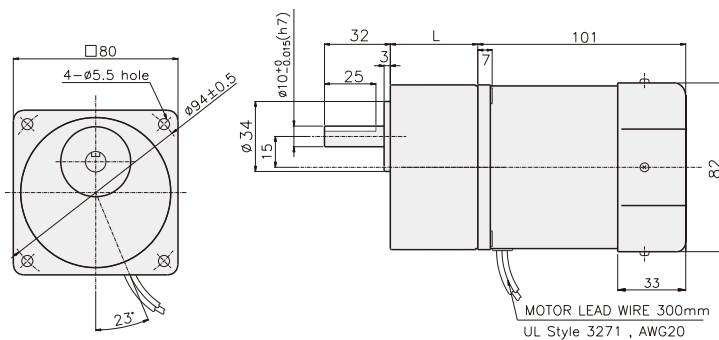


KEY SPEC

- KEY
- KEY GROOVE



K8IP40F□ + K8G□B(C)



치수도표

품번	L	적용기종	취부 BOLT
01	32	K8G3~18B(C,M)	M5 P0.8 X 50
02	42.5	K8G20~250B(C,M)	M5 P0.8 X 65

무게

PART	WEIGHT(kg)	
MOTOR	1.70	
DECIMAL GEARHEAD	0.46	
GEAR HEAD	K8G3~18B(C)	0.51
	K8G20~40B(C)	0.64
	K8G50~250B(C)	0.70