

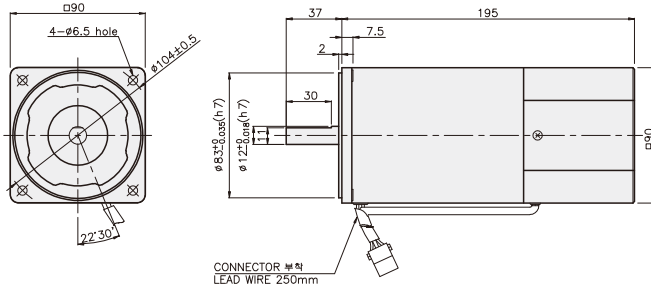
SPEED CONTROL MOTOR - SU SERIES

180W

□90mm

INDUCTION MOTOR

K9IS180F□-SU



SPECIFICATIONS

180W 연속정격, 4극

| Model | Voltage (V) | Frequency (Hz) | Speed (rpm) | Permissible Torque | | Start T. (N·m/kgf·cm) | Current (A) | Condenser (μF) |
|--------------|-------------|----------------|-------------|-----------------------|---------------------|-----------------------|-------------|----------------|
| | | | | 1200 rpm (N·m/kgf·cm) | 90 rpm (N·m/kgf·cm) | | | |
| K9I□180FJ-SU | 100 | 50 | 90 ~ 1400 | 0.9/9 | 0.35/3.5 | 0.6/6 | 5.2 | 50 |
| | | | 90 ~ 1700 | | | 0.65/6.5 | | |
| K9I□180FU-SU | 110 | 60 | 90 ~ 1700 | 0.9/9 | 0.35/3.5 | 0.52/5.2 | 4.8 | 30 |
| | | | 115 | | | 0.55/5.5 | | |
| K9I□180FL-SU | 200 | 50 | 90 ~ 1400 | 0.9/9 | 0.3/3 | 0.5/5 | 2.2 | 12 |
| | | | 90 ~ 1700 | | | 0.42/4.2 | | |
| K9I□180FC-SU | 220 | 50 | 90 ~ 1400 | 0.9/9 | 0.3/3 | 0.45/4.5 | 2.2 | 8 |
| | | | 90 ~ 1700 | | | 0.42/4.2 | | |
| | 230 | 50 | 90 ~ 1400 | 1/10 | 0.33/3.3 | 0.53/5.3 | 2.4 | |
| | | | 90 ~ 1700 | | | 0.5/5 | | |
| K9I□180FD-SU | 240 | 50 | 90 ~ 1400 | 1/10 | 0.33/3.3 | 0.6/6 | 2 | 8 |

* □ : SHAFT 형상(S : STARAIGHT, P : PINION)

RATED TORQUE OF GEARHEAD

● 단상 100V/115V

단위 = 상단 : N·m / 하단 : kgf·cm

| Model | Ratio | Speed(rpm) | | | | | | | | | | | | | | | | | | | | | | | |
|--------------|-------|------------|------|------|------|------|------|------|------|------|-------|-------|-------|-------|-------|-------|-------|-------|-------|-------|-------|-------|-----|-----|-----|
| | | 3 | 3.6 | 5 | 6 | 7.5 | 9 | 10 | 12.5 | 15 | 18 | 20 | 25 | 30 | 36 | 40 | 50 | 60 | 75 | 90 | 100 | 120 | 150 | 180 | 200 |
| K9I□180F□-SU | 1200 | 2.19 | 2.62 | 3.65 | 4.37 | 5.47 | 6.56 | 7.29 | 8.20 | 9.84 | 11.81 | 13.12 | 14.76 | 17.71 | 21.26 | 23.62 | 29.52 | 30 | 30 | 30 | 30 | 30 | 30 | 30 | 30 |
| | 90 | 0.85 | 1.02 | 1.42 | 1.70 | 2.13 | 2.55 | 2.84 | 3.19 | 3.83 | 4.59 | 5.10 | 5.74 | 6.89 | 8.27 | 9.19 | 11.48 | 13.78 | 15.50 | 18.60 | 20.67 | 24.80 | 30 | 30 | 30 |

● 단상 200V/240V

단위 = 상단 : N·m / 하단 : kgf·cm

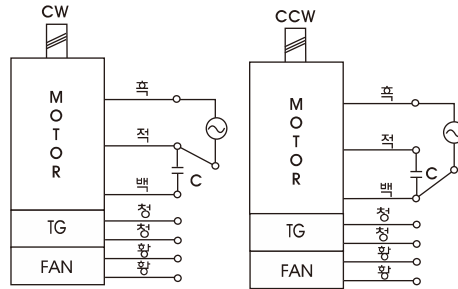
| Model | Ratio | Speed(rpm) | | | | | | | | | | | | | | | | | | | | | | | |
|--------------|-------|----------------------------|------|------|------|------|------|------|------|------|-------|-------|-------|-------|-------|-------|-------|-------|-------|-------|-------|-------|-------|-------|-----|
| | | 3 | 3.6 | 5 | 6 | 7.5 | 9 | 10 | 12.5 | 15 | 18 | 20 | 25 | 30 | 36 | 40 | 50 | 60 | 75 | 90 | 100 | 120 | 150 | 180 | 200 |
| K9I□180F□-SU | 1200 | 200V/220V 50Hz/60Hz | 2.19 | 2.62 | 3.65 | 4.37 | 5.47 | 6.56 | 7.29 | 8.20 | 9.84 | 11.81 | 13.12 | 14.76 | 17.71 | 21.26 | 23.62 | 29.52 | 30 | 30 | 30 | 30 | 30 | 30 | 30 |
| | | 230V/50Hz/60Hz 240/50Hz | 2.43 | 2.92 | 4.05 | 4.86 | 6.08 | 7.29 | 8.10 | 9.11 | 10.94 | 13.12 | 14.58 | 16.40 | 19.68 | 23.62 | 26.24 | 30 | 30 | 30 | 30 | 30 | 30 | 30 | 30 |
| | 90 | 200V/220V 50Hz/60Hz | 0.73 | 0.87 | 1.22 | 1.46 | 1.82 | 2.19 | 2.43 | 2.73 | 3.28 | 3.94 | 4.37 | 4.92 | 5.90 | 7.09 | 7.87 | 9.84 | 11.81 | 13.29 | 15.94 | 17.71 | 21.26 | 26.57 | 30 |
| | | 230V/50Hz/60Hz 240/50Hz | 0.80 | 0.96 | 1.34 | 1.60 | 2.00 | 2.41 | 2.41 | 3.34 | 4.01 | 4.81 | 5.35 | 5.41 | 6.50 | 7.79 | 8.66 | 10.83 | 12.99 | 14.61 | 17.54 | 19.49 | 23.38 | 29.23 | 30 |

- * GEARHEAD·DECIMAL GEARHEAD는 별매입니다.
- * GEARHEAD의 품명중 □에는 감속비가 들어갑니다.
- * 색이 MOTOR와 같은 방향, 그 외에는 반대 방향입니다.
- * 표의 감속비보다 더 감속하고자 할 경우는 GEARHEAD와 MOTOR 사이에 감속비 10의 DECIMAL GEARHEAD를 설치할 수 있습니다. 이 경우의 허용 TORQUE는 30 N·m / 300 kgf·cm 입니다.
- * 회전수는 MOTOR의 동기 회전수 (50 Hz : 1500 rpm, 60 Hz : 1800 rpm)를 기준으로 하여 감속비로 나누어서 계산하였습니다. 실제의 회전수는 부하의 크기에 따라서 표시된 수치보다 2~20% 적습니다.

SPEED CONTROL MOTOR - SU SERIES

GEARHEAD

CONNECTION DIAGRAMS



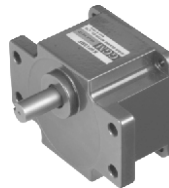
회전방향은 출력축에서 볼 경우

DIMENSIONS

K9P□BU



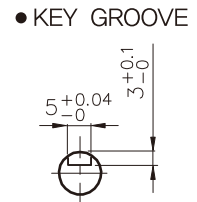
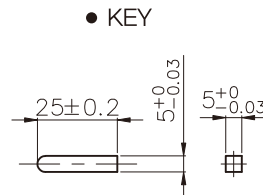
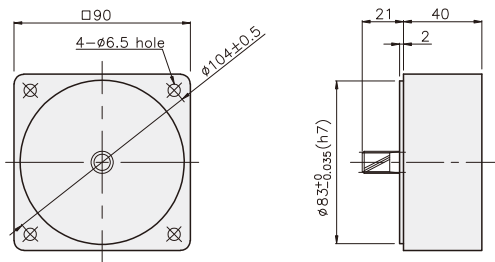
K9P□BUF



DECIMAL GEARHEAD

K9P10BX

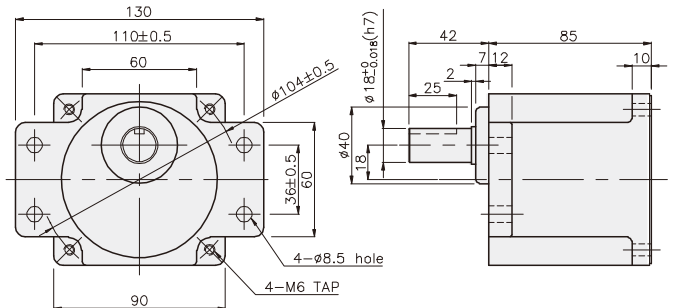
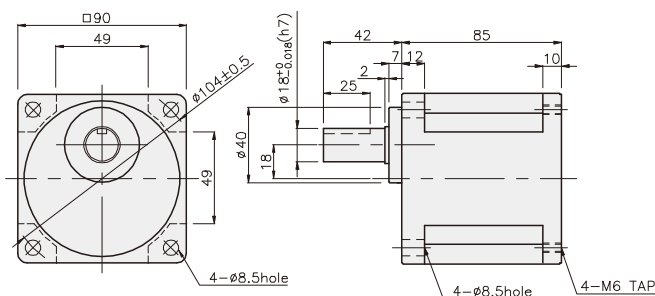
KEY SPEC



GEARHEAD

K9P□BU

K9P□BUF



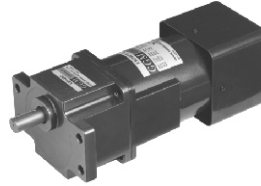
GEARHEAD

DIMENSIONS

K9IP180F□-SU + K9P□BU



K9IP180F□-SU + K9P□BUF



무게

| PART | WEIGHT(kg) |
|------------------|------------|
| MOTOR | 4.24 |
| DECIMAL GEARHEAD | 0.62 |

치수도표

| 품번 | 적용기종 | 취부 BOLT |
|----|------------|--------------|
| 01 | K9P3~200BU | M6 P1.0 X 20 |
| 02 | K9P10BX | M6 P1.0 X 65 |

무게

| PART | WEIGHT(kg) |
|--------------|------------|
| K9P3~10BU | 1.44 |
| K9P12.5~20BU | 1.55 |
| K9P25~60BU | 1.69 |
| K9P75~200BU | 1.74 |

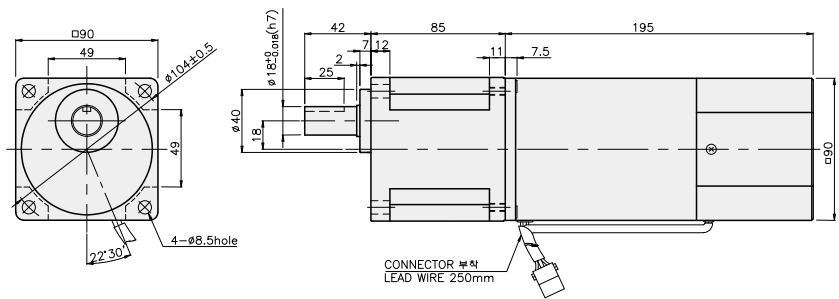
치수도표

| 품번 | 적용기종 | 취부 BOLT |
|----|-------------|--------------|
| 01 | K9P3~200BUF | M6 P1.0 X 20 |
| 02 | K9P10BX | M6 P1.0 X 65 |

무게

| PART | WEIGHT(kg) |
|---------------|------------|
| K9P3~10BUF | 1.50 |
| K9P12.5~20BUF | 1.62 |
| K9P25~60BUF | 1.76 |
| K9P75~200BUF | 1.82 |

K9IP180F□-SU + K9P□BU



K9IP180F□-SU + K9P□BUF

