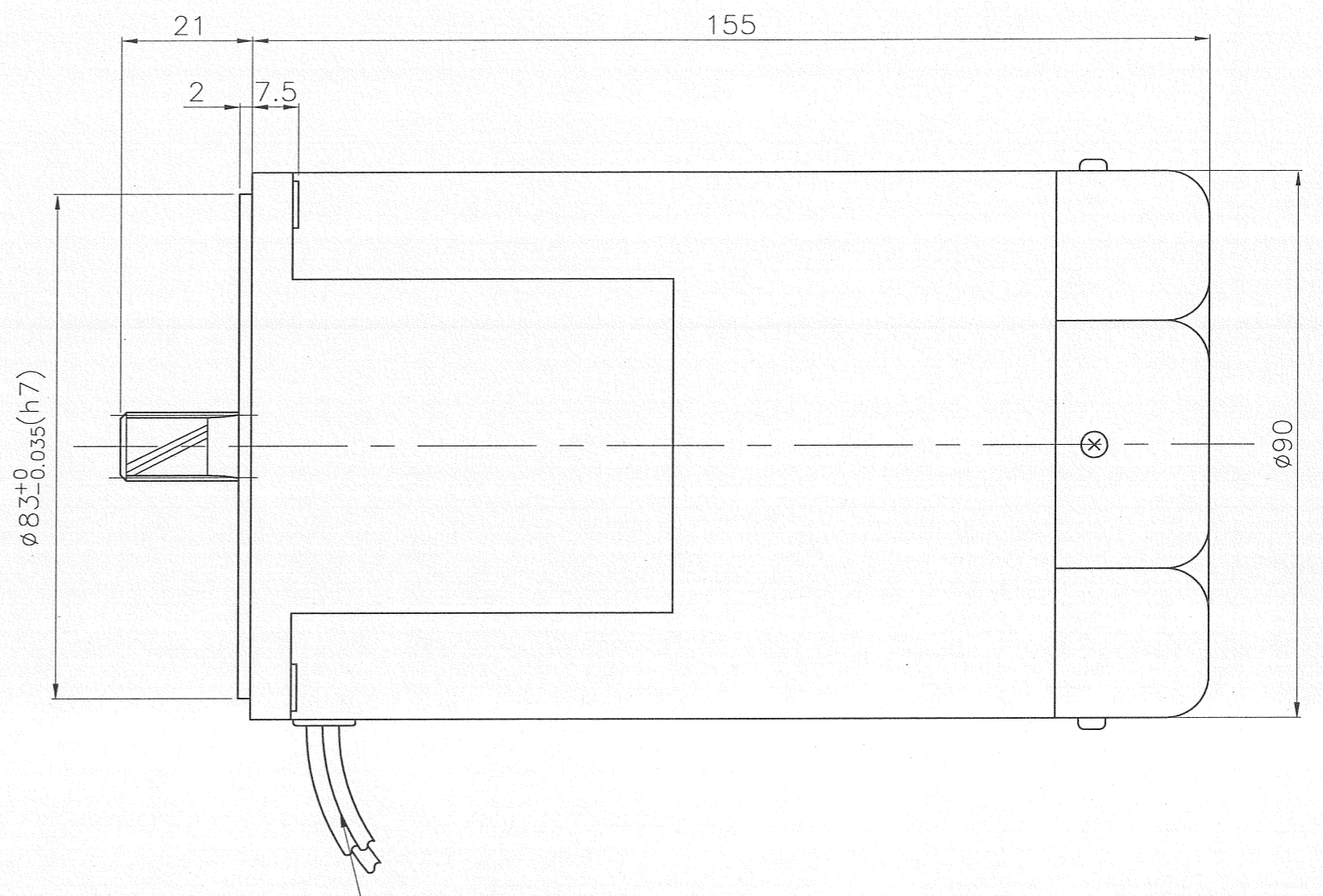
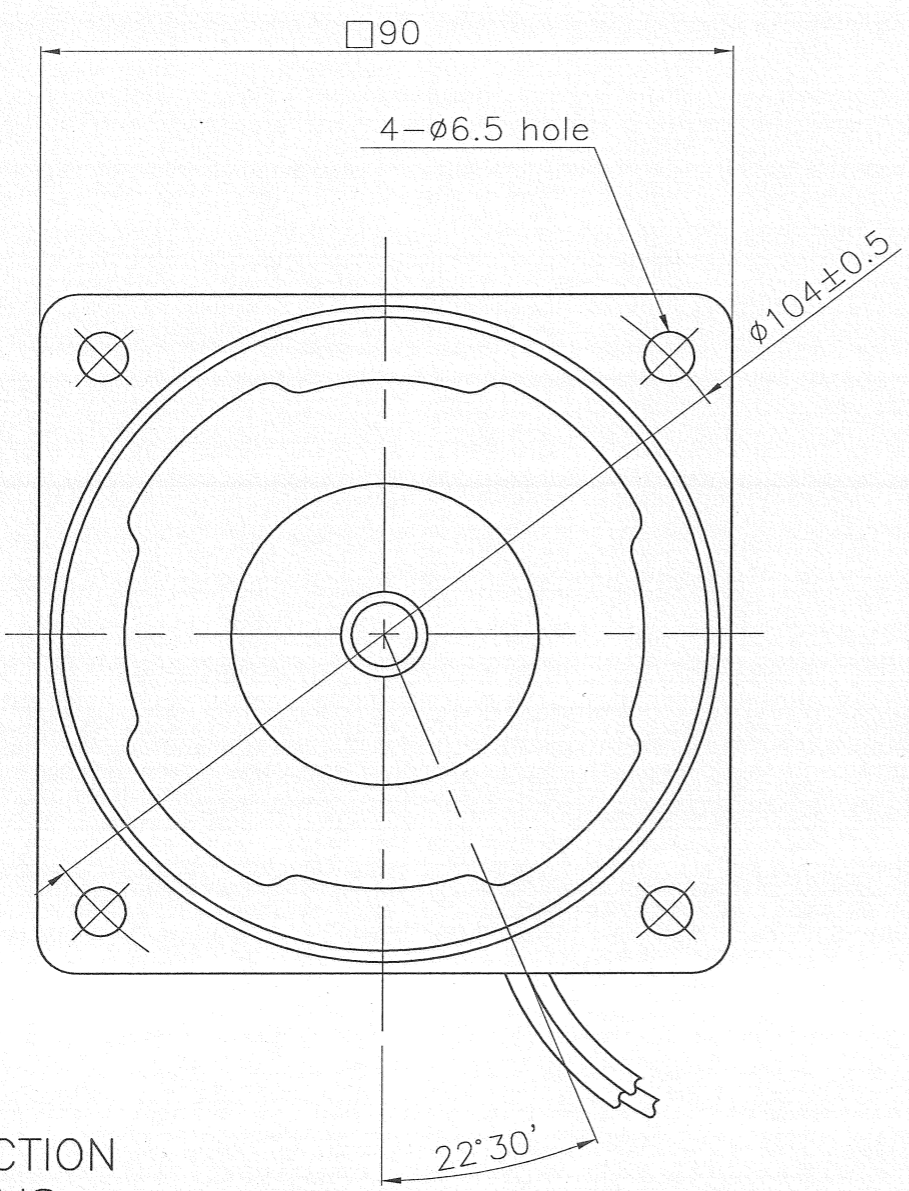


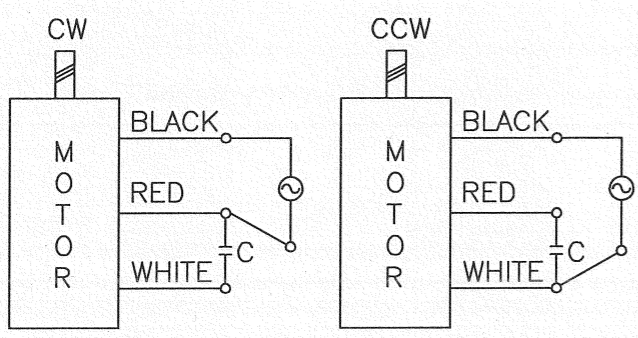
No.	REMARK	REVISION No.	SIGN



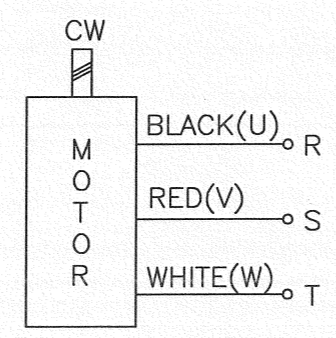
MOTOR LEAD WIRE 300mm
UL Style 3271 , AWG20

■ CONNECTION DIAGRAMS

SINGLE-PHASE MOTOR



THREE-PHASE MOTOR

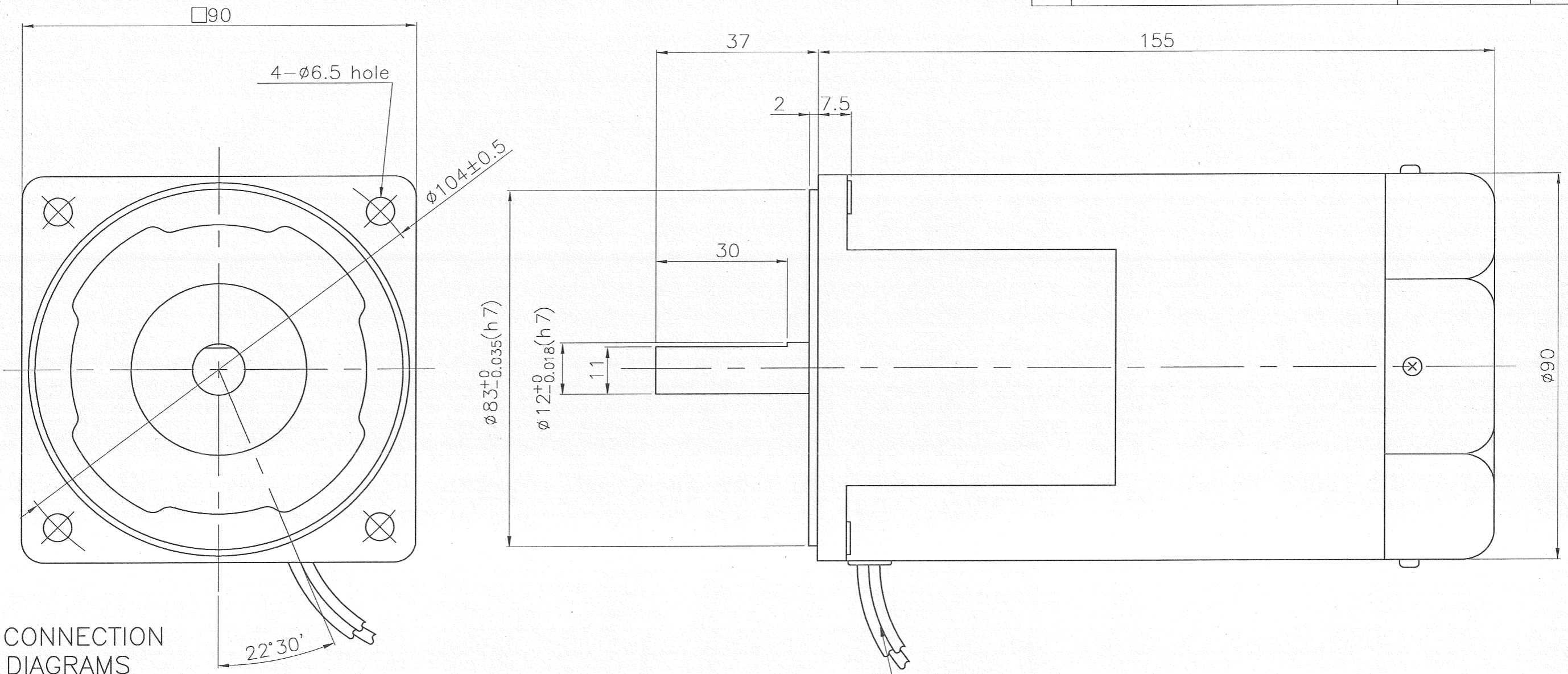


CCW :
To change
any two connections
among U, V and W.

* CW=Clock Wise, CCW=Counter Clock Wise
* The Direction of motor rotation is as viewed from the front shaft end of the motor.
* C = Capacitor = Condenser

DRAW	12. 11. 7	SCALE : 1/1	PART NAME
DESIGNED		UNIT : mm	OUTLINE
CHECKED			APPLICATION MODEL
APPROVED			K9IP180F□, K9RP180F□, K9IP200F□ K9IP200F□-2P
			DWG NO.
			2-OL-00032

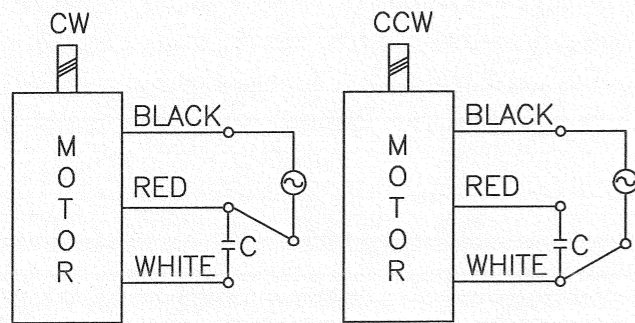
No.	REMARK	REVISION No.	SIGN



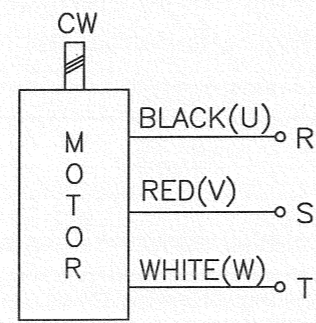
MOTOR LEAD WIRE 300mm
UL Style 3271, AWG20

CONNECTION DIAGRAMS

SINGLE-PHASE MOTOR



THREE-PHASE MOTOR

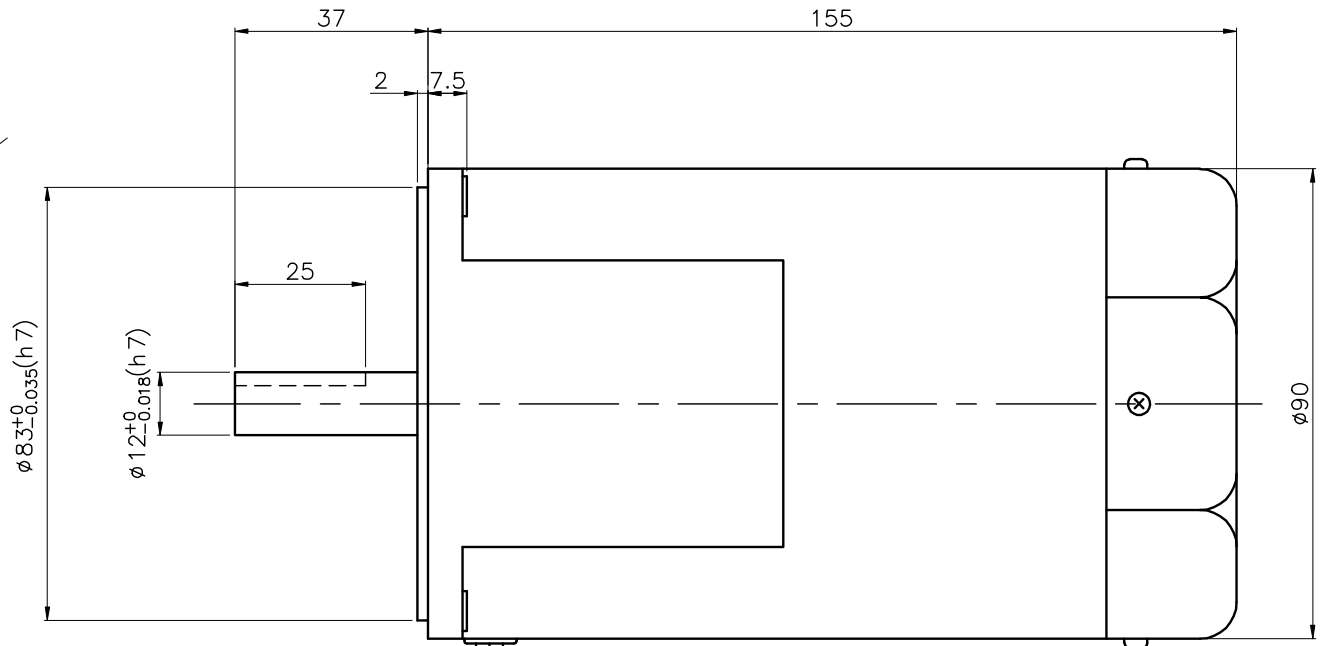
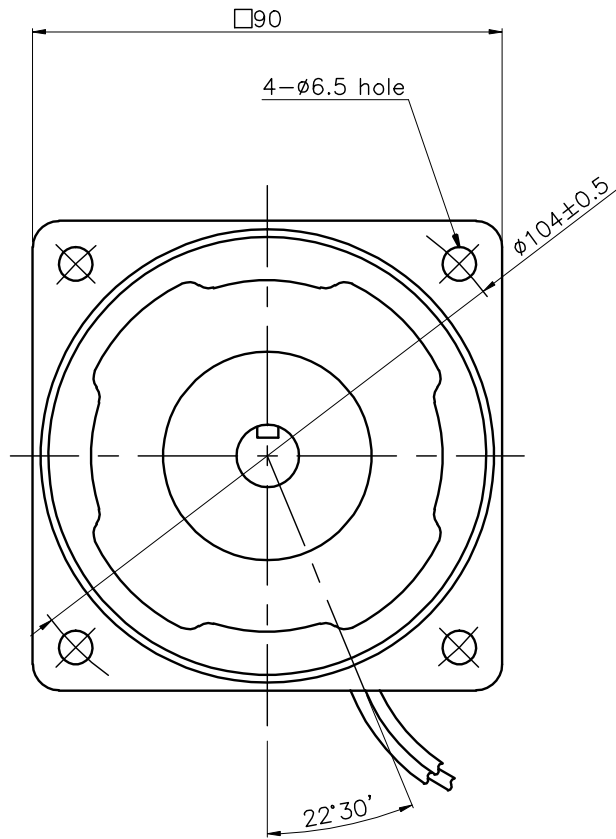


CCW :
To change
any two connections
among U, V and W.

- * CW=Clock Wise, CCW=Counter Clock Wise
- * The Direction of motor rotation is as viewed from the front shaft end of the motor.
- * C = Capacitor = Condenser

DRAW	12. 11. 7	SCALE : 1/1	PART NAME
DESIGNED		UNIT : mm	OUTLINE
CHECKED			APPLICATION MODEL
APPROVED			K9IS180F□, K9IS180F□-2P, K9RS180F□ K9IS200F□, K9IS200F□-2P
		RELATION DWG.	DWG NO.
GLOBAL GEARED MOTOR			2-0L-00033

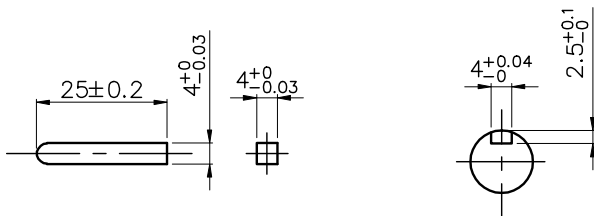
No.	REMARK	REVISION No.	SIGN



MOTOR LEAD WIRE 300mm
UL Style 3271, AWG20

◎ KEY

◎ KEY GROOVE



DRAW	08. 10. 21	S. J Kim	SCALE : 1/1	PART NAME	OUTLINE
DESIGNED	08. 10. 21	S. J Kim	UNIT : mm	APPLICATION MODEL	
CHECKED	08. 10. 21	J. A Choi		K9 □K120F □-C50(For 50Hz) K9 □K150F □-C50(For 50Hz) K9 □K180F □	
APPROVED	08. 10. 21	B. E Choi		RELATION DWG.	DWG NO.

G G M
GLOBAL GEARED MOTOR