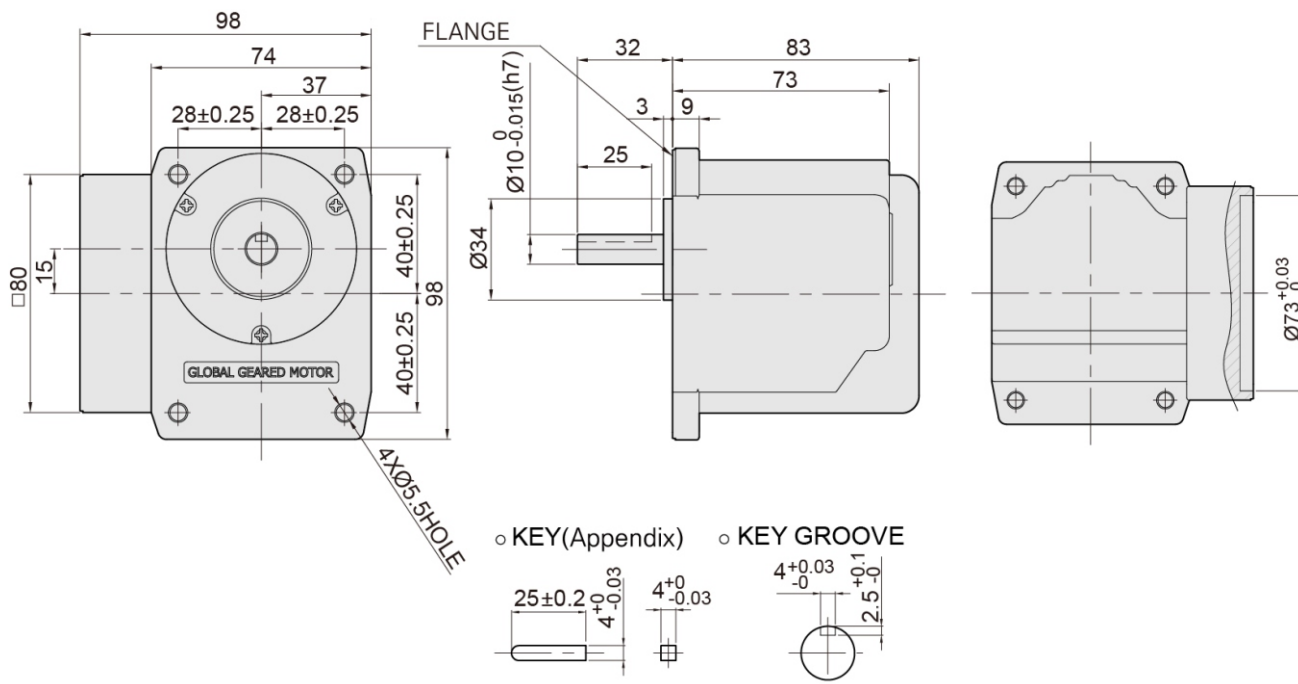


K8G□BRS (中心轴)



Diagram and general contents

Outline Drawing



RATED TORQUE OF GEARHEAD

● 50Hz

单位=上端：N·m/下端：kgf·cm

Model	Speed(rpm)	500	416	300	250	200	166	120	100	83	60	50	42	30	25	20	17	15	12.5	10	8.3
Motor/Gearhead	Ratio	3	3.6	5	6	7.5	9	12.5	15	18	25	30	36	50	60	75	90	100	120	150	180
K8I□25N□(-T, -T5) / K8G□BRS		0.28	0.33	0.46	0.56	0.69	0.83	1.57	1.89	2.26	3.15	3.77	4.53	6.29	7.55	8	8	8	8	8	8
		2.8	3.3	4.6	5.6	6.9	8.3	15.7	18.9	23	31.5	37.7	45	62.9	75.5	80	80	80	80	80	80

● 60Hz

单位=上端：N·m/下端：kgf·cm

Model	Speed(rpm)	600	500	360	300	240	200	144	120	100	72	60	50	36	30	24	20	18	15.0	12	10.0
Motor/Gearhead	Ratio	3	3.6	5	6	7.5	9	12.5	15	18	25	30	36	50	60	75	90	100	120	150	180
K8I□25N□(-T, -T5) / K8G□BRS		0.23	0.28	0.39	0.47	0.58	0.70	1.32	1.58	1.90	2.64	3.16	3.79	5.27	6.32	7.91	8	8	8	8	8
		2.3	2.8	3.9	4.7	5.8	7.0	13.2	15.8	19	26.4	31.6	38	52.7	63.2	79	80	80	80	80	80

- * 减速机品名中 □ 里为减速比。
- * 输出轴旋转方向是發動機和相反的方向前進。
- * 转速以电机同期转速 (50HZ: 1500RPM 60HZ:1800RPM) 为基准除以减速比计算出来的。实际转速根据负载的大小比表上的数据小2~20%。
- * 启动时比额定时的传达效率低, 输出Torque变小。

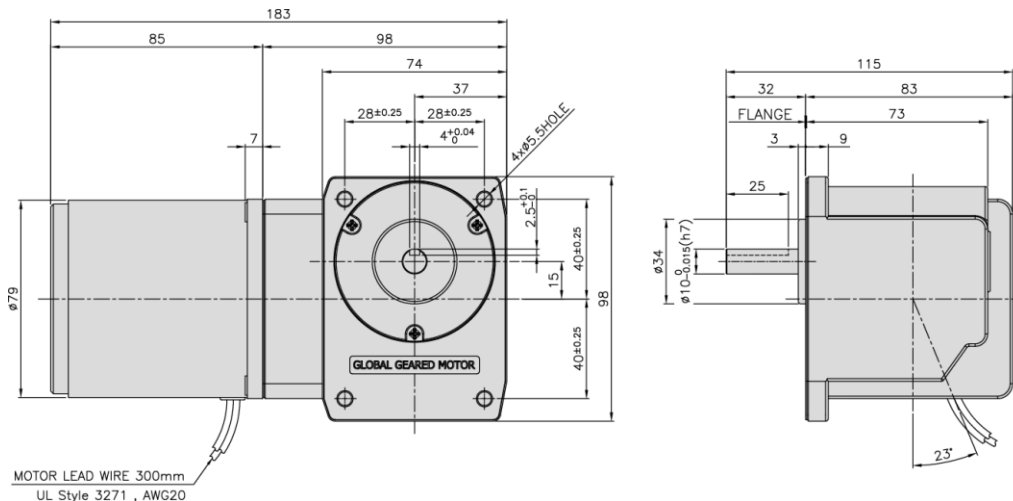
K8G□BRS (中心轴)

DIMENSIONS

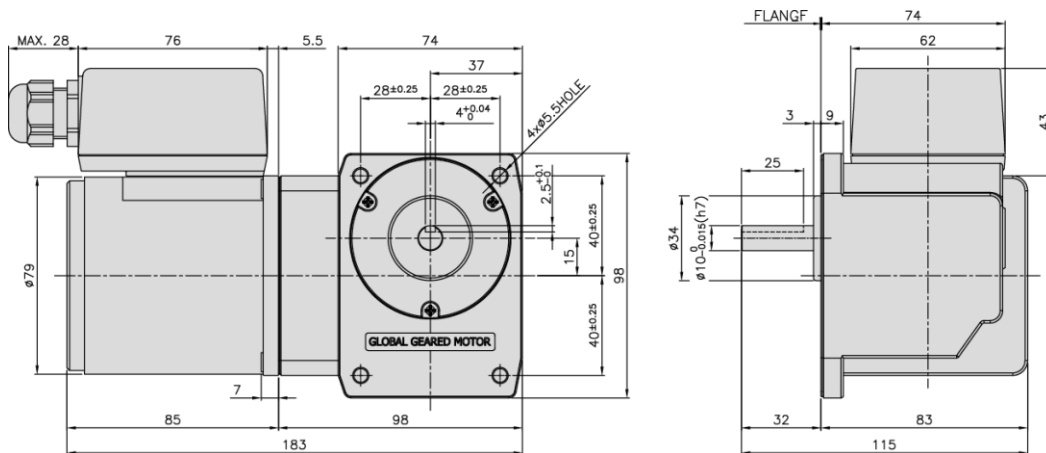
額定扭矩和重量

PART		WEIGHT(kg)	安裝螺絲
GEAR HEAD		1.60	M5 P0.8 X 15
MOTOR	K8IG25N□	1.58	
	K8IG25N□-T	1.76	
	K8IG25N□-T5	1.76	

K8□G25N□ + K8G□BRS



K8□G25N□-T + K8G□BRS



K8□G25N□-T5 + K8G□BRS

