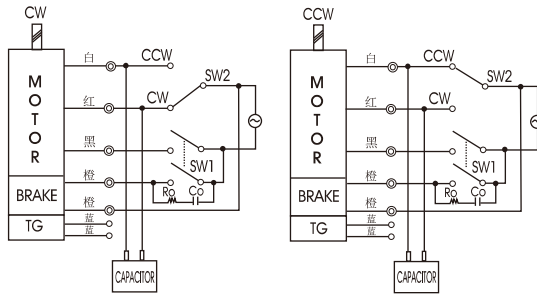




## GEARHEAD

### CONNECTION DIAGRAMS

為保護觸點，請連接Cr電路以獲得電壓浪湧吸收，如接線圖所示。  
 $R_o = 5 - 200\Omega$   
 $C_o = 0.1 \sim 0.2\mu F \ 200V(400V)$



旋轉方向由出力軸側看時

SPEED CONTROL & BRAKE MOTOR

### DIMENSIONS

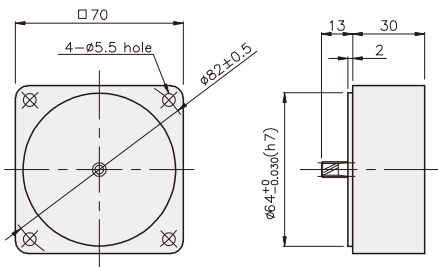
K7G□B(C)



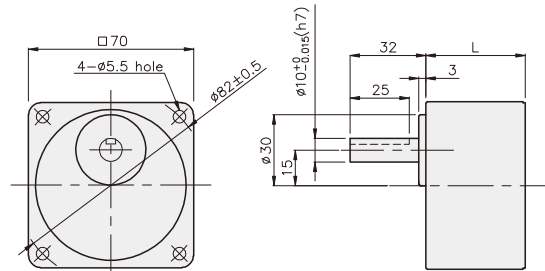
K7RG15N□-D + K7G□B(C)



DECIMAL GEARHEAD  
K7G10BX

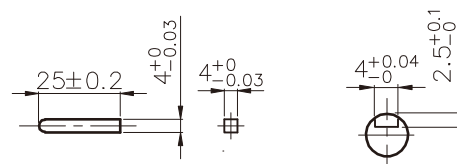


GEARHEAD  
K7G□B(C)



#### KEY SPEC

- KEY
- KEY GROOVE



#### 尺寸表

编号	L	应用型号	安装螺丝
01	32	K7G3~18B(C)	M5 P0.8 X 50
02	42	K7G20~200B(C)	M5 P0.8 X 65
03	30	K7G10BX	M5 P0.8 X 90

#### 重量

PART	WEIGHT(kg)	
MOTOR	1.42	
DECIMAL GEAR HEAD	0.32	
GEAR HEAD	K7G3~18B(C)	0.38
	K7G20~40B(C)	0.46
	K7G50~200B(C)	0.51

K7RG15N□-D + K7G□B(C)

